



2Generation Approach

*Promoting Child Success &
Family Self-Sufficiency*

JONI THACHER,
SONOMA COUNTY HUMAN SERVICES DEPARTMENT

MARTA FLAX TILLING,
COMMUNITY ACTION PARTNERSHIP OF SONOMA COUNTY





**1. 2Gen:
The Why & What**

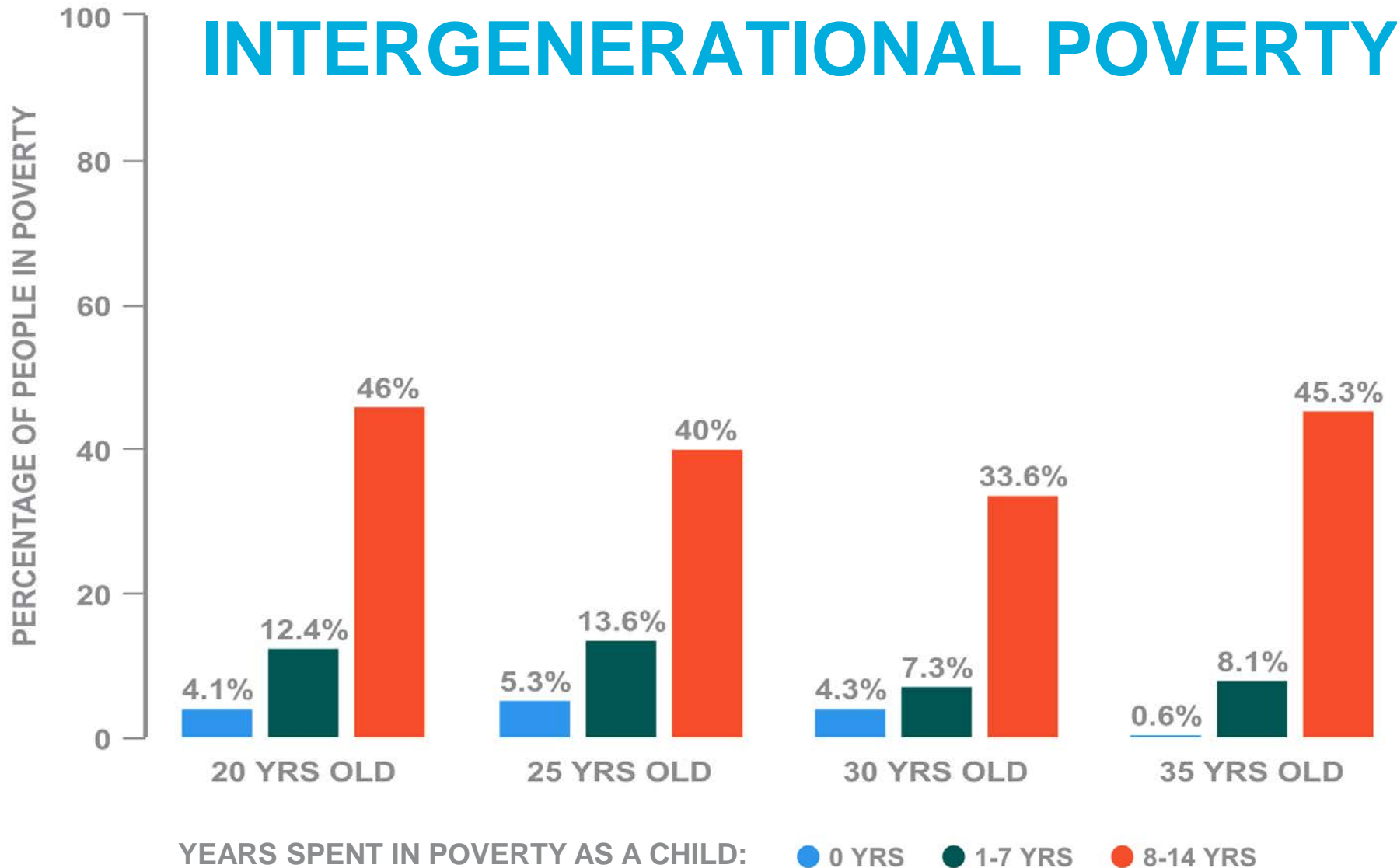
**2. 2Gen:
The Who & How**

**3. Discussion:
Challenges, Successes
& Questions**

2GEN

WHY AND WHAT?

INTERGENERATIONAL POVERTY



WHY AND WHAT

CALIFORNIA CHILDREN IN IN LOW-INCOME FAMILIES



ALL CHILDREN
20%

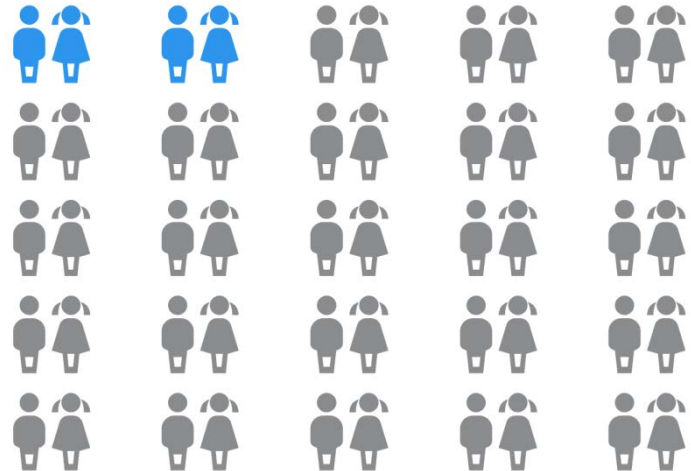
LATINO CHILDREN
30%

CHILD POVERTY & PARENT EDUCATIONAL ATTAINMENT

**NEITHER PARENT
COMPLETED HIGH SCHOOL**

**53% CHILD POVERTY
RATE**

**AT LEAST ONE PARENT HAS
A BACHELOR'S DEGREE**



**7.5% CHILD POVERTY
RATE**

BIG PART OF THE WHY

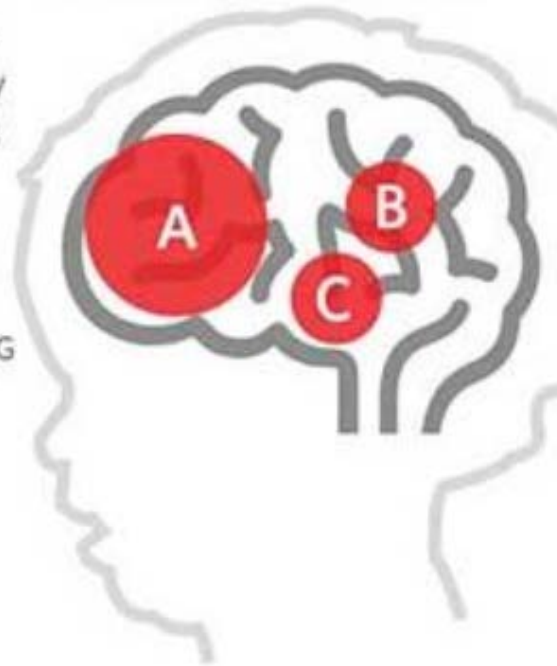
Research shows poverty diminishes brain growth.

Early stress and lack of positive early experiences means poverty gets under the skin, undermining development in key brain regions for school readiness and academic success.

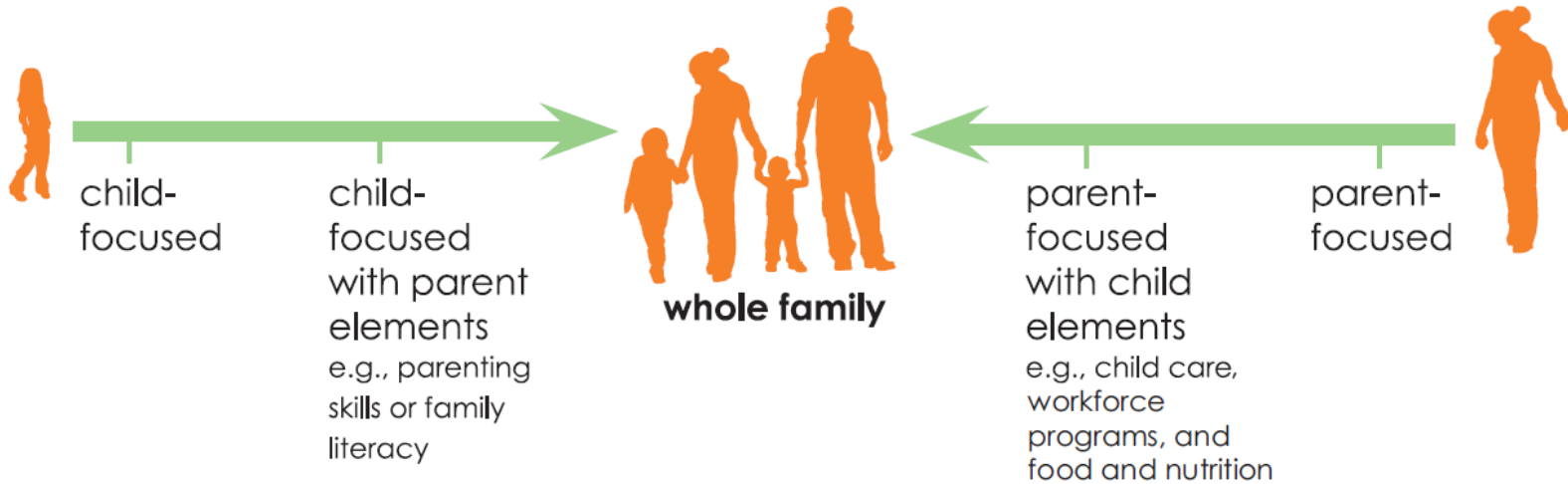
A. SELF-REGULATION & LEARNING

B. MEMORY & LANGUAGE

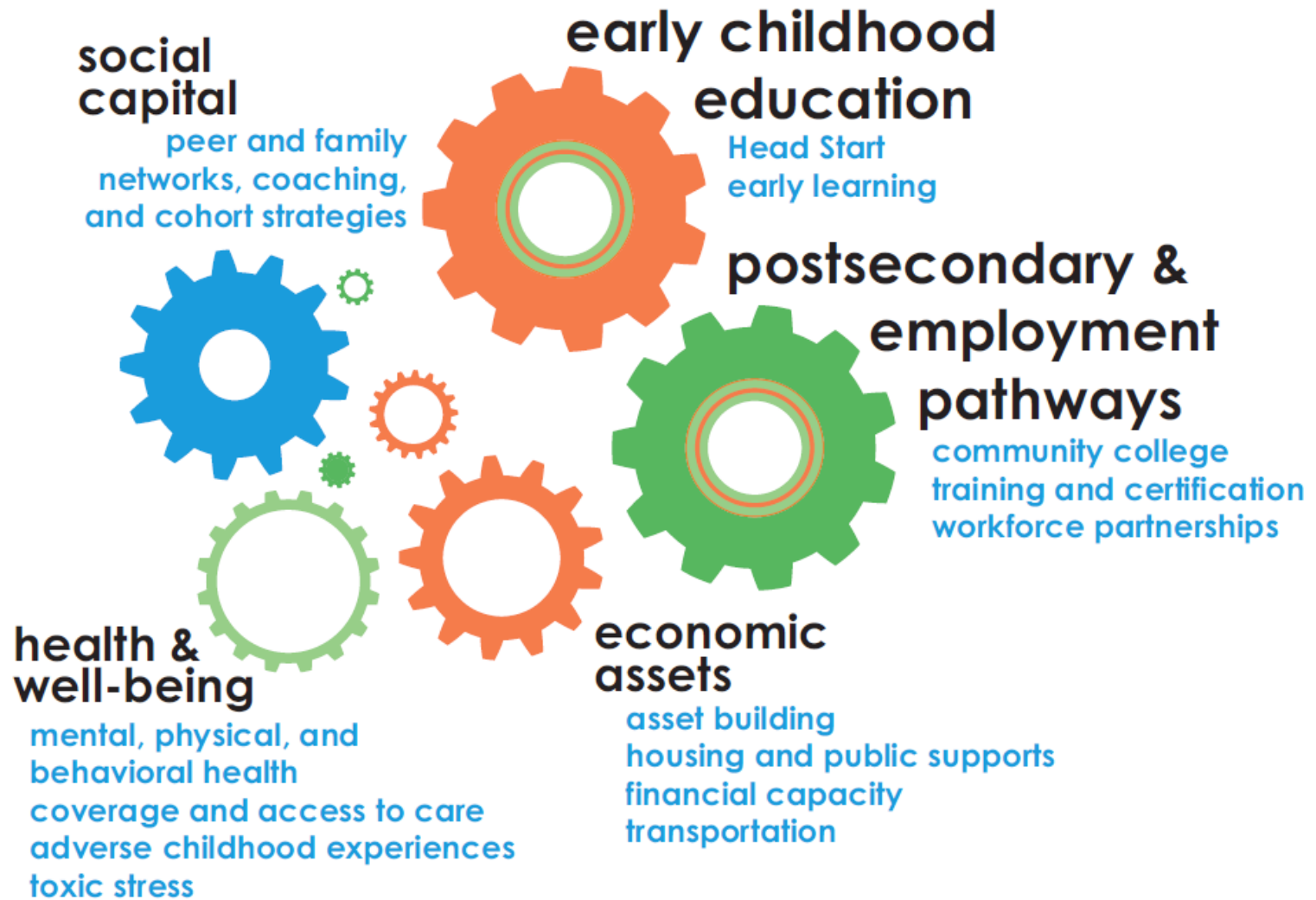
C. EMOTIONAL CONTROL



2 GEN: THE WHOLE FAMILY APPROACH



5 COMPONENTS OF A 2GEN APPROACH



peer and family
networks, coaching,
and cohort strategies



SOCIAL CAPITAL

- Do families feel that they have a voice?
- Is there someone who will listen when something concerns them?
- Do families have meaningful connections with others in the community?

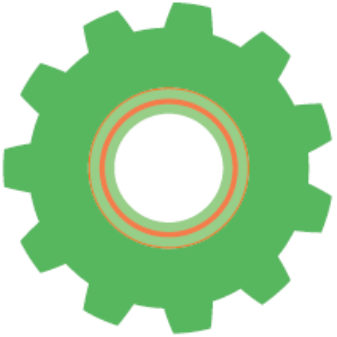
EARLY CHILDHOOD DEVELOPMENT



Head Start
early learning

- Do parents understand the importance of early development and their key role in supporting it?
- Do parents have access to quality early education/childcare for their children?
- Are parents actively engaged in their children's education birth-18 and beyond?

POSTSECONDARY & EMPLOYMENT PATHWAYS



community college
training and certification
workforce partnerships

- Do parents have opportunities to develop workforce skills?
- Do parents have access to educational opportunities to increase their economic stability?
- Do parents have access to services that will support their educational goals?

ECONOMIC ASSETS



asset building
housing and public supports
financial capacity
transportation

- Do families have access to services and programs that help meet basic needs?
- Can families find affordable housing? Transportation? Student financial aid?
- Do parents have support to build economic assets that help in times of need and provide for security in the future?



HEALTH & WELL-BEING

mental, physical, and
behavioral health
coverage and access to care
adverse childhood experiences
toxic stress

- Do families have access to health insurance?
- Do families have access to mental and behavioral health supports?
- Are there opportunities for healthy living and eating in the community?

2GEN

WHO AND HOW?

SONOMA COUNTY, CALIFORNIA

- North of San Francisco
- Agriculture, winemaking & tourism
- 500,000 residents



25% of **residents** are
Latino



50% of **students** are
Latino

MEDIAN EARNINGS



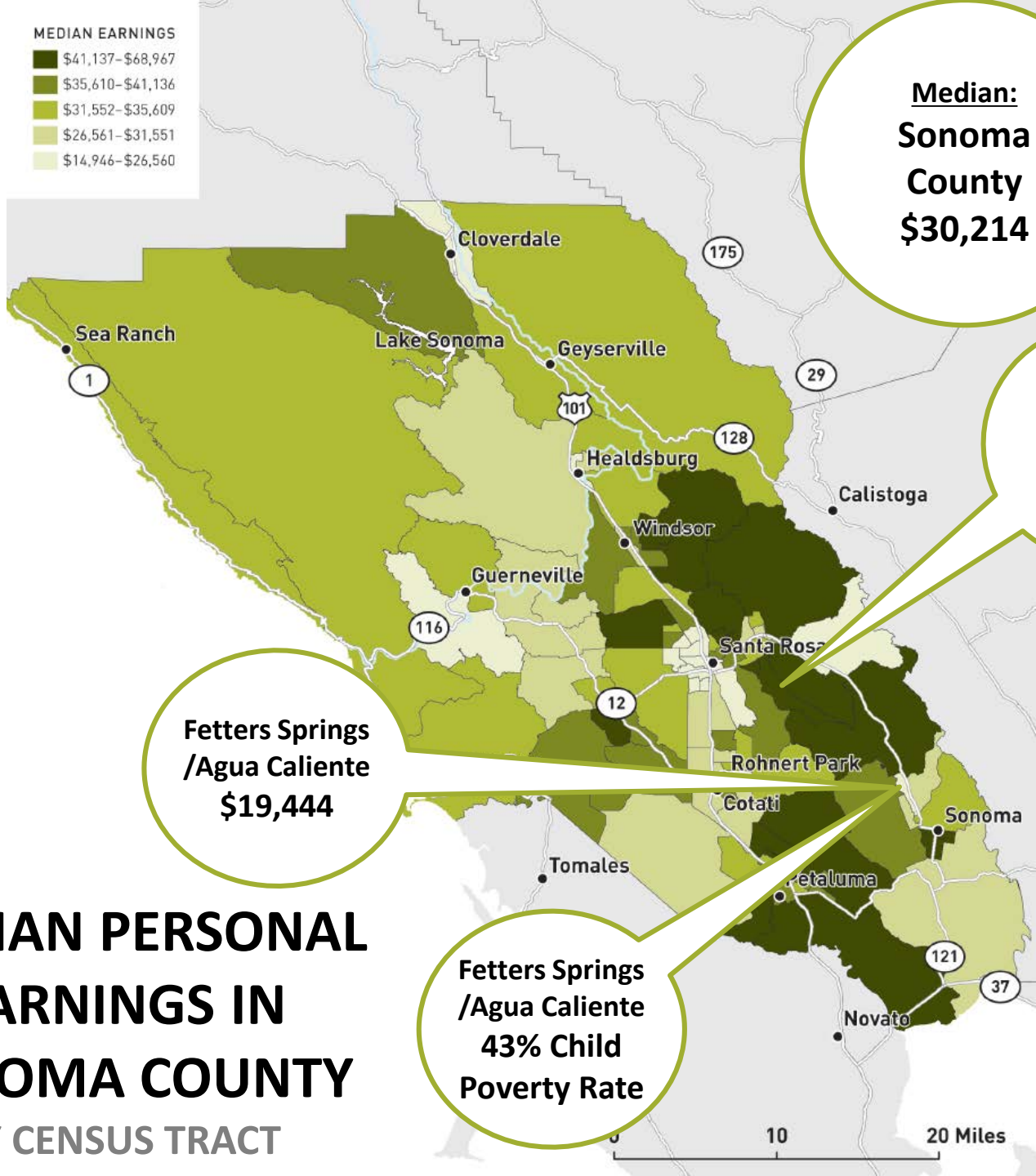
**Median:
Sonoma
County
\$30,214**

**EAST
BENNETT
VALLEY
\$68,967**

**Fetters Springs
/Agua Caliente
\$19,444**

**Fetters Springs
/Agua Caliente
43% Child
Poverty Rate**

**MEDIAN PERSONAL
EARNINGS IN
SONOMA COUNTY
BY CENSUS TRACT**



SONOMA COUNTY CHILD POVERTY

20%

of **Latino** children live in poverty

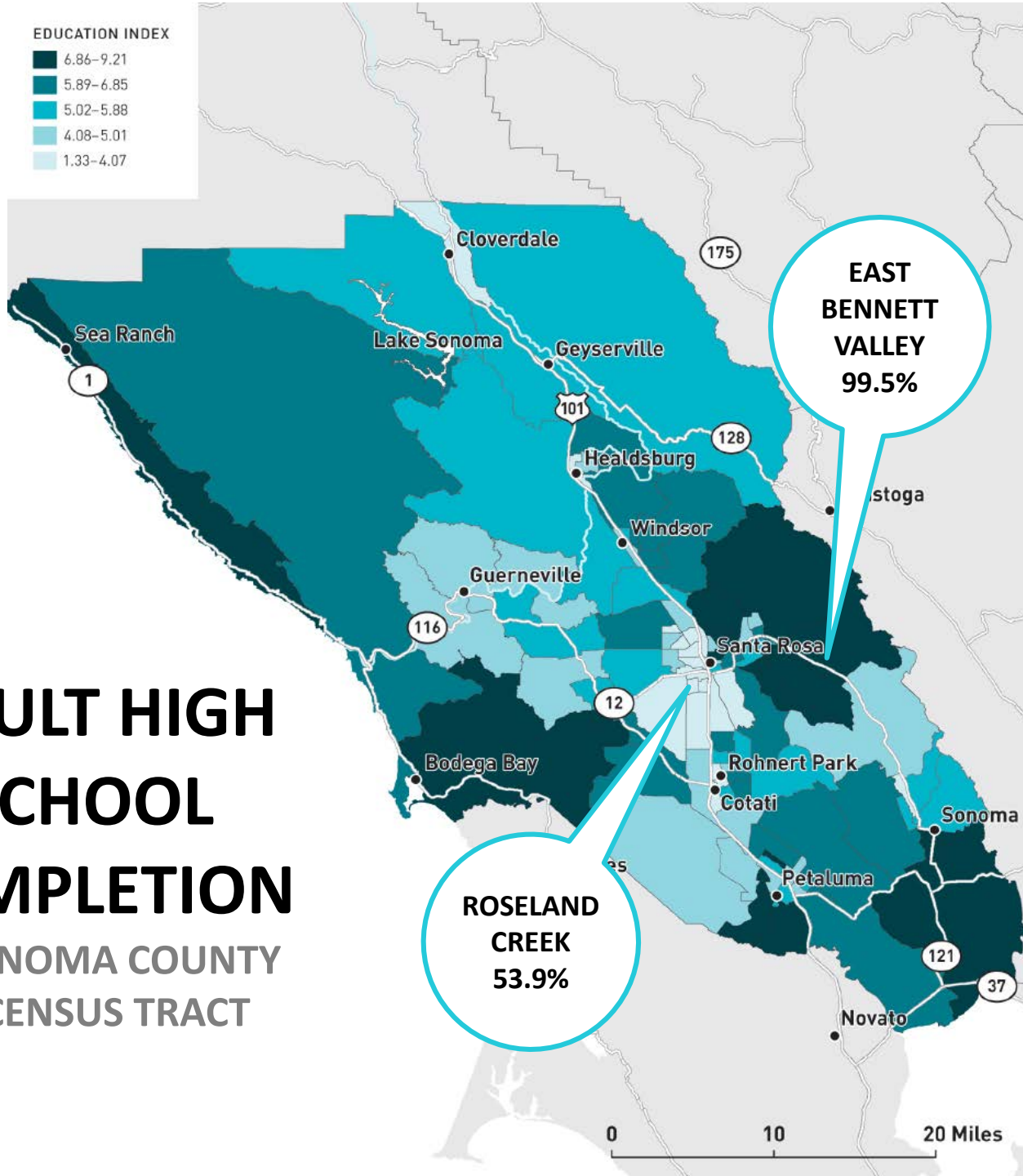
7%

of **Caucasian** children live in poverty

EDUCATION INDEX

- 6.86-9.21
- 5.89-6.85
- 5.02-5.88
- 4.08-5.01
- 1.33-4.07

ADULT HIGH SCHOOL COMPLETION IN SONOMA COUNTY BY CENSUS TRACT



0 10 20 Miles

SONOMA COUNTY KINDERGARTEN READINESS

Caucasian

Latino

A COMMITTED COMMUNITY

- **\$7 million** invested in **early childhood** services in 2017-18 (First 5 & other local funders)
- Excellent community **college** & Sonoma State **University**
- **Economic empowerment** programs
- **Neighborhood initiatives** promoting social capital

A COMMITTED COMMUNITY



Keeping Kids in School
Sonoma County Probation Department

2-GEN

NOW MORE THAN EVER

OCTOBER 2017





2GEN & SONOMA COUNTY

- Informal early adoption
- Tulsa site visit
- Define existing gaps and assets
- Integrate services with local partners

WHAT WE OFFER

CareerAdvance®

CAP - TULSA, OKLAHOMA

- Healthcare workforce development
- One-on-one coaching and peer support
- No cost for tuition, books, or childcare
- Wraparound services
- 10 unique certifications

COMMUNITY ACTION PARTNERSHIP SONOMA COUNTY

- Head Start & Early Head Start
- AVANCE
- Pasitos & Primeros Pasitos
- Financial Stability
- Housing Support
- Health programs



LOCAL EFFORTS



MOBILITY COACH PROJECT

- Grant from First 5
- 6 month pilot
 - “Are you ready to take the next step?”
- Focus on education continuation and workforce development
- Outreach to families with children 0 – 5

MOBILITY COACH PROJECT

- Bi-weekly 1-on-1 coaching
- Monthly cohort meetings
- Definition of personal short term goals
- Connection of participants to resources



SHORT OUTCOMES

Participants will Articulate Goals to:



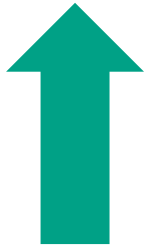
- Pursue education
- Attain access to health insurance
- Increase connections to other families

INTERMEDIATE OUTCOMES



- **Children meeting developmental milestones**
- **Family connections to economic & social supports**
- **Family stability**

Target Long Term Outcomes



Sustained parent, child & family results



Multiplier effects across generations



Return on investment for communities

EVALUATION

- National Community of Practice
- Whole-family approach
- Integration of services with community partners
- Data interoperability





Partner across agencies to leverage resources and funding for greatest impact

A FOCUS ON



POSITIVE SHORT & LONG TERM OUTCOMES

Discussion

In **groups of 2 – 3**, select one of the following questions to discuss:

Where is your organization with **implementing** or investing in **2Generation approaches**?

What is needed to **change the culture** from silos to integration?

What **2Gen funding strategies** are integrated into your programming?



THANK
YOU!



Marta Tilling
mtilling@capsonoma.org



Joni Thacher
jthacher@schsd.org